

You are subscribed to updates from the Centers for Disease Control and Prevention (CDC).

Vaccination Recommendations

With the new H1N1 virus continuing to cause illness, hospitalizations and deaths in the U.S. during the normally flu-free summer months and some uncertainty about what the upcoming flu season might bring, CDC's Advisory Committee on Immunization Practices has taken an important step in preparations for a voluntary novel H1N1 vaccination effort to counter a possibly severe upcoming flu season. On July 29, ACIP met to consider who should receive novel H1N1 vaccine when it becomes available.

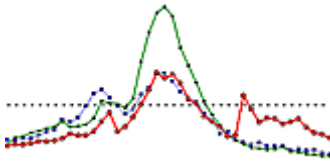
[Learn more >>](#)

U.S. Situation Update

[Weekly Flu Activity Estimates](#)



[U.S. Patient Visits Reported for Influenza-like Illness \(ILI\)](#)



[U.S. Influenza-like Illness \(ILI\) Reported by Regions](#)



Total U.S. Novel H1N1 Flu Hospitalizations and Deaths		
Posted August 14, 2009, 11:00 AM ET		
Data reported to CDC by August 13, 2009, 2:00 PM ET		
Reporting States and Territories*	Hospitalized Cases	Deaths
51	7,511	477
*Includes the District of Columbia, American Samoa, Guam, Puerto Rico and the U.S. Virgin Islands.		
The number of hospitalized novel H1N1 cases		

and deaths presented in this table are an aggregate of reports received by CDC from U.S. states and territories and will be updated weekly each Friday at 11am. For state level information, refer to [state health departments](#).

CDC discontinued reporting of individual confirmed and probable cases of novel H1N1 infection on July 24, 2009. CDC will report the total number of hospitalizations and deaths weekly, and continue to use its traditional surveillance systems to track the progress of the novel H1N1 flu outbreak.

For more information about CDC's novel H1N1 influenza surveillance system, see [Questions & Answers About CDC's Novel H1N1 Influenza Surveillance](#).

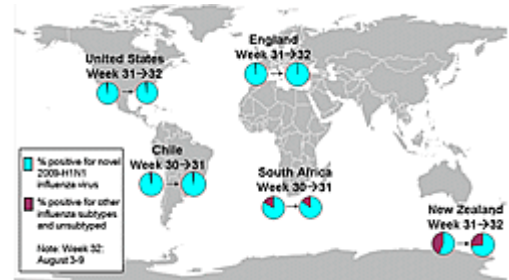
International Human Cases of H1N1 Flu Infection

See: [World Health Organization](#).

For more information about the U.S. situation, see the [CDC H1N1 Flu website](#).

International Situation Update

This situation report provides an update to the international situation as of August 14, 2009. World Health Organization (WHO) regions have reported 177,457 laboratory-confirmed cases of novel 2009-H1N1 influenza virus (new H1N1) with 1,462 deaths. The laboratory-confirmed cases represent an underestimation of total cases in the world as many countries have shifted to strategies of clinical confirmation and prioritization of laboratory testing for only persons with severe illness and/or high risk conditions. The new H1N1 influenza virus is the dominant influenza virus in circulation in the world. According to a WHO Global Influenza Surveillance Network (GISN) report dated August 4th, 71% of all influenza viruses currently detected globally are the new H1N1. The new H1N1 accounts for 66% of influenza viruses in the Northern Hemisphere and 89% of influenza viruses in the Southern Hemisphere. There are indications that disease may be decreasing in South America and part of Australia. Disease associated with new H1N1 influenza is continuing to increase in southern Africa.



Recent Updates of Interest

- [Weekly FluView Map and Surveillance Report for Week Ending August 8, 2009](#)
During week 31 (August 2-8, 2009), influenza activity decreased in the United States, however, there were still higher levels of influenza-like illness than is normal for this time of year.
- [Novel H1N1 Flu: U.S. Situation Update](#)
As of 11:00 AM ET on August 14, 2009, CDC is reporting 7,511 hospitalized cases and 477 deaths in 51 states and territories (including the District of Columbia, American Samoa, Guam, Puerto Rico and the U.S. Virgin Islands).

- [Novel H1N1 Flu: International Situation Update](#)
This situation report provides an update of the international situation as of August 14, 2009. World Health Organization (WHO) regions have reported 177,457 laboratory-confirmed cases of novel influenza A (H1N1) and 1,462 deaths.
- [Doses Administered Reporting \[PDF 559KB\]](#)
The purpose of this document is to describe the doses administering monitoring requirements, describe options for collecting data, and outline key planning steps. The target audience is CRA doses administered coordinators points of contact, and their supervisors, immunization program managers, immunization information systems staff, and preparedness coordinators.
- [CDC Novel H1N1 Vaccination Planning Q&A](#)
Information for professionals on planning and preparing for H1N1 vaccination.
- [UPDATE General Business and Workplace Guidance for the Prevention of Novel Influenza A \(H1N1\) Flu in Workers](#)
This guidance is to help employers with employees in OSHA's Lower Risk (Caution) Zone: those employees who have minimal occupational contact with the general public and other coworkers (for example, office employees).
- [Novel H1N1 Flu: CDC Response](#)
CDC continues to take aggressive action to respond to the outbreak. CDC's response goals are to reduce the spread and severity of illness, and to provide information to help health care providers, public health officials and the public address the challenges posed by this new public health threat.

Additional Updates on the CDC H1N1 Flu Website

To learn about other recent updates made to the CDC H1N1 Flu Website, please check the "What's New" page on the [CDC H1N1 Flu website](#).

[Modify/Update Email Preferences](#) | [Unsubscribe](#) | [Send Feedback](#) | [Learn more about CDC Email Updates](#)

To receive the latest news for your region, please [update your profile](#) with your country, state and zip code.

Questions or problems? Please contact support@govdelivery.com.

