



H1N1 Flu

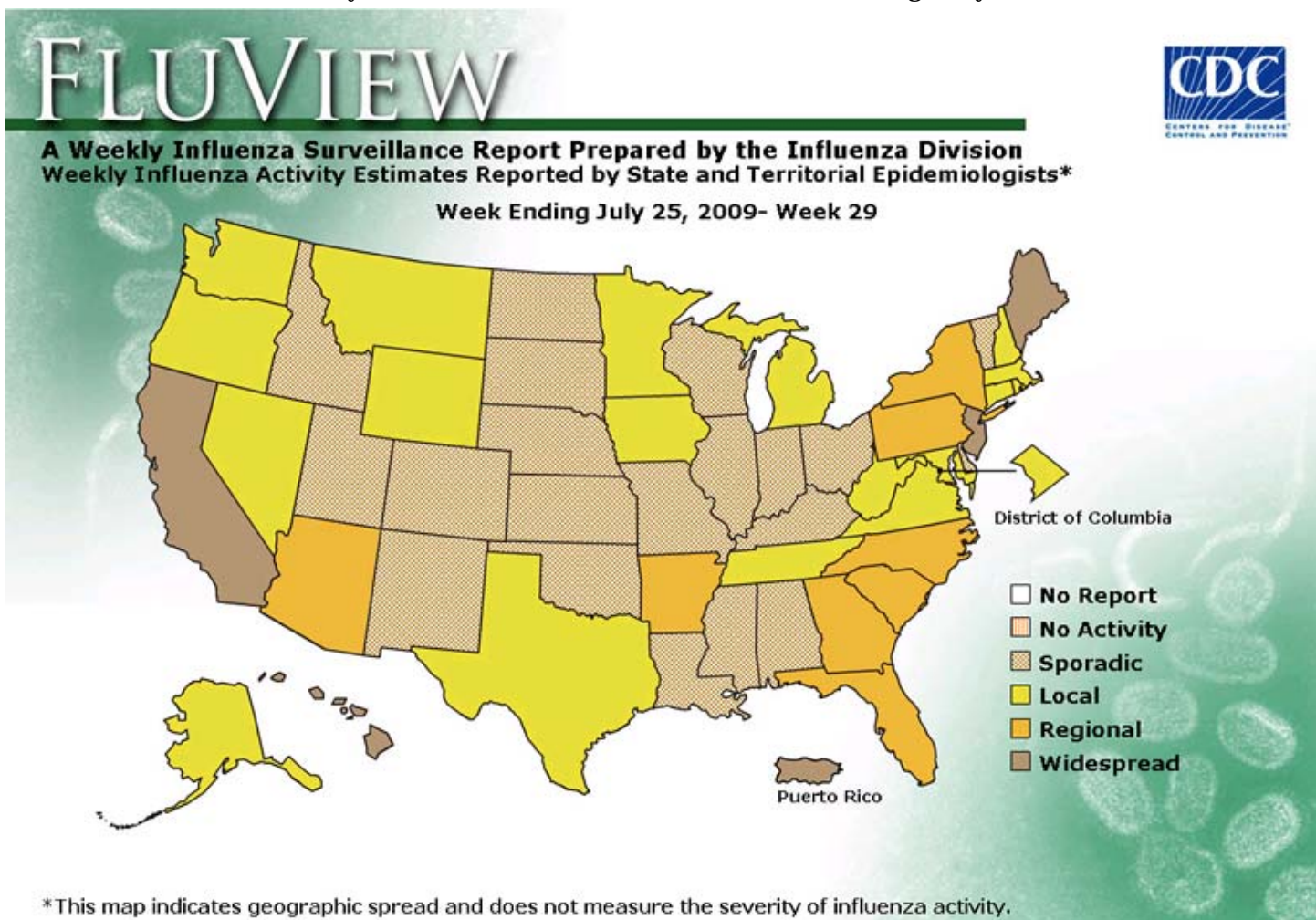
Novel H1N1 Flu Situation Update

July 31, 2009, 11:00 AM ET

Map: Weekly Influenza Activity Estimates Reported by State and Territorial Epidemiologists

(Activity levels indicate geographic spread of both seasonal and novel influenza A [H1N1] viruses)

(Posted July 31, 2009, 1:30 PM ET, for Week Ending July 25, 2009)

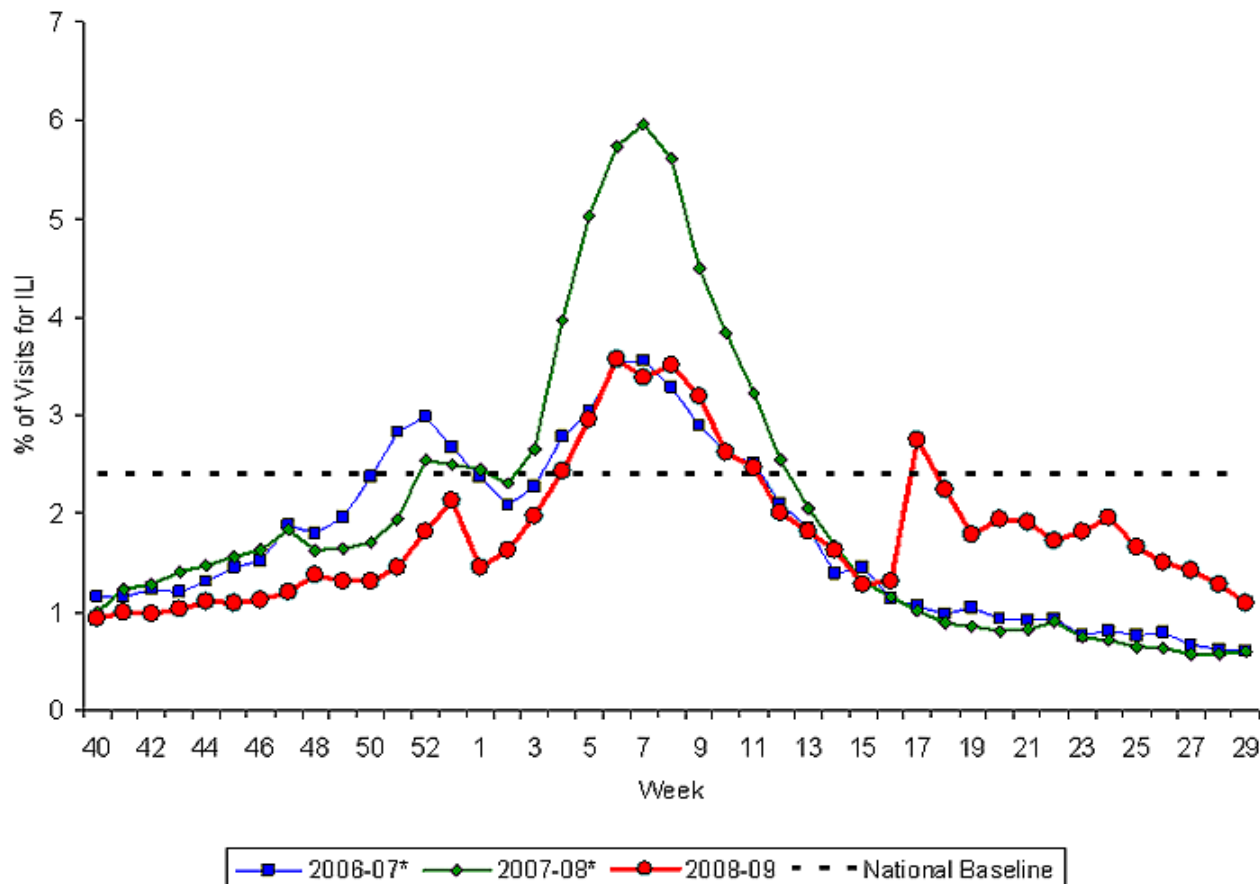


For more details about the data in the map above, see the [FluView Surveillance Report](#) for the week ending July 25, 2009. For information about how this map is updated, see [Questions & Answers About CDC's Online Reporting](#).

Percentage of Visits for Influenza-like Illness (ILI) Reported by the U.S.

Outpatient Influenza-like Illness Surveillance Network (ILINet), National Summary 2008-2009 and Previous Two Seasons

(Posted July 31, 2009, 1:30 PM ET, for Week Ending July 25, 2009)



*There was no week 53 during the 2006-07 and 2007-08 seasons, therefore the week 53 data point for those seasons is an average of weeks 52 and 1.

[View Chart Data](#)

Total U.S. Novel H1N1 Flu Hospitalizations and Deaths

Posted July 31, 2009, 11:00 AM ET

Data reported to CDC by July 30, 2009, 11:00 AM ET

Reporting States and Territories*

47

Hospitalized Cases

5,514

Deaths

353

*Includes the District of Columbia, American Samoa, Guam, Puerto Rico and the U.S. Virgin Islands.

The number of hospitalized novel H1N1 cases and deaths presented in this table are an aggregate of reports received by CDC from U.S. states and territories and will be updated weekly each Friday at 11am. For state level information, refer to [state health departments](#).

CDC discontinued reporting of individual confirmed and probable cases of novel H1N1 infection on July 24, 2009. CDC will report the total number of hospitalizations and deaths weekly, and continue to use its traditional surveillance systems to track the progress of the novel H1N1 flu outbreak. For more information about CDC's novel H1N1 influenza surveillance system, see [Questions & Answers About CDC's Novel H1N1 Influenza Surveillance](#).